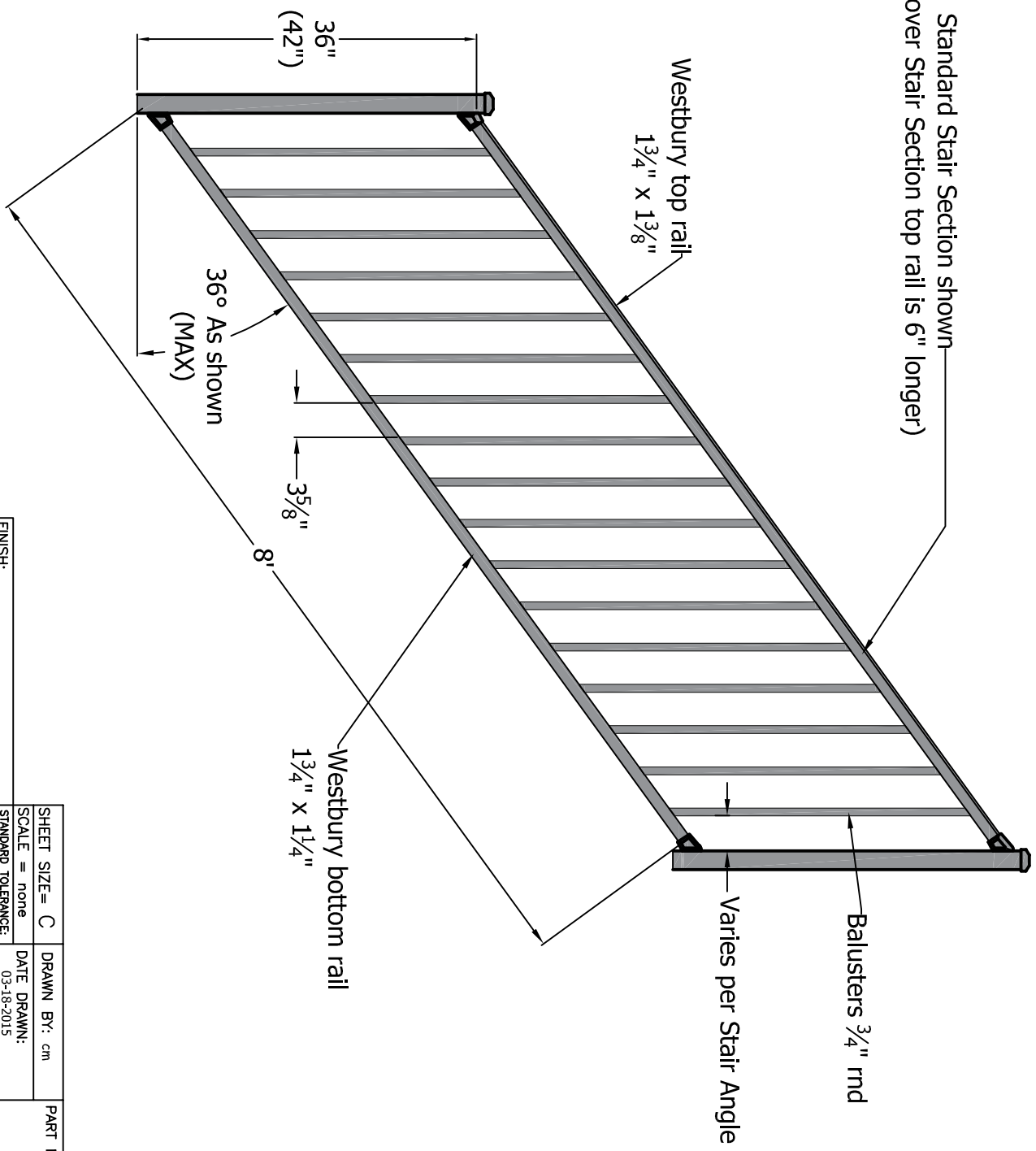


REV.	REVISION	DATE

Standard Stair Section shown
(Crossover Stair Section top rail is 6" longer)



4

3

2

1

<p>DSI Digger Specialties, Inc. 3446 US 6 EAST Bremen, IN 46506</p>	<p>FINISH:</p> <p>STANDARD TOLERANCE: .00 ±.01 FRACTIONS: .000 ±.005 ±.1"</p>	<p>SHEET SIZE = C</p> <p>SCALE = none</p>	<p>DRAWN BY: cm</p> <p>DATE DRAWN: 03-18-2015</p>	<p>PART NUMBER:</p>
	<p>DRAFT: 20150318-12C</p> <p>FILE LOC: Z:\Aluminum\Westbury\C101 Tuscany\C101 Sections Stair</p> <p>FILE NAME: C101 8 ft Stair Section</p>	<p>STYLE: C101 Tuscany</p>	<p>REV.</p>	

A B C D