

COMPONENT	DESCRIPTION	ITEM NUMBER
FRAMING COMPONENTS		
Track Actual dimensions: 1.25 in x 8.25 in x 12 ft / 16 ft / 20 ft (31 mm x 209 mm x 365 cm / 487 cm / 609 cm)	1.25 in x 8.25 in x 12 ft—Track 1.25 in x 8.25 in x 16 ft—Track 1.25 in x 8.25 in x 20 ft—Track	CGOQ0812ET60 CGOQ0816ET60 CGOQ0820ET60
Beam Actual dimensions: 2.125 in x 8.25 in x 12 ft / 16 ft / 20 ft (53 mm x 209 mm x 365 cm / 487 cm / 609 cm)	2.125 in x 8.25 in x 12 ft—Beam 2.125 in x 8.25 in x 16 ft—Beam 2.125 in x 8.25 in x 20 ft—Beam	CGO20812EB20 CGO20816EB20 CGO20820EB20
Joist Actual dimensions: 1.625 in x 8 in x 12 ft / 16 ft / 20 ft (41 mm x 203 mm x 365 cm / 487 cm / 609 cm) Additional lengths are available by special order.	1.625 in x 8 in x 12 ft—Joist 1.625 in x 8 in x 16 ft—Joist 1.625 in x 8 in x 20 ft—Joist	CGO20812EJ50 CGO20816EJ50 CGO20820EJ50
Beam End Cap Actual dimensions: 2.125 in x 8.125 in (53 mm x 206 mm)	2.125 in x 8.125 in—Beam End Cap (40/box)	ELVENDCAP40
Adjustable Mid-Span Block Actual dimensions: 4 in x 9.875 in (101 mm x 250 mm)	4 in x 9.875 in (10 sets)	ELVMIDSPANBLOCK
Adjustable Beam Block Actual dimensions: 5 in x 9.875 in (127 mm x 250 mm)	5 in x 9.875 in (10 sets)	ELVBEAMBLOCK
Deck Support Post Actual dimensions: 3.5 in x 3.5 in x 10 ft (88 mm x 88 mm x 304 cm) 5.5 in x 5.5 in x 10 ft (139 mm x 139 mm x 304 cm)	3.5 in x 3.5 in x 10 ft—Deck Support Post 5.5 in x 5.5 in x 10 ft—Deck Support Post	www.trexdeckpost.com
Trex Elevations® Universal Connector Clip (glass-filled nylon with stainless steel screw)	50 sq. ft (4.6 sq. m) box 500 sq. ft (46.5 sq. m) bucket	ELVUNIVCLIP ELVUNIVCLIPPAIL
Trex Elevations® Start Clip (stainless steel with stainless steel screw)	400 sq. ft (37.2 sq. m) bag	ELVSTARTCLIP
Trex Elevations®-Approved Spray Paint Net weight 12 oz.	Available in Elevations grey only.	1-800-966-7580

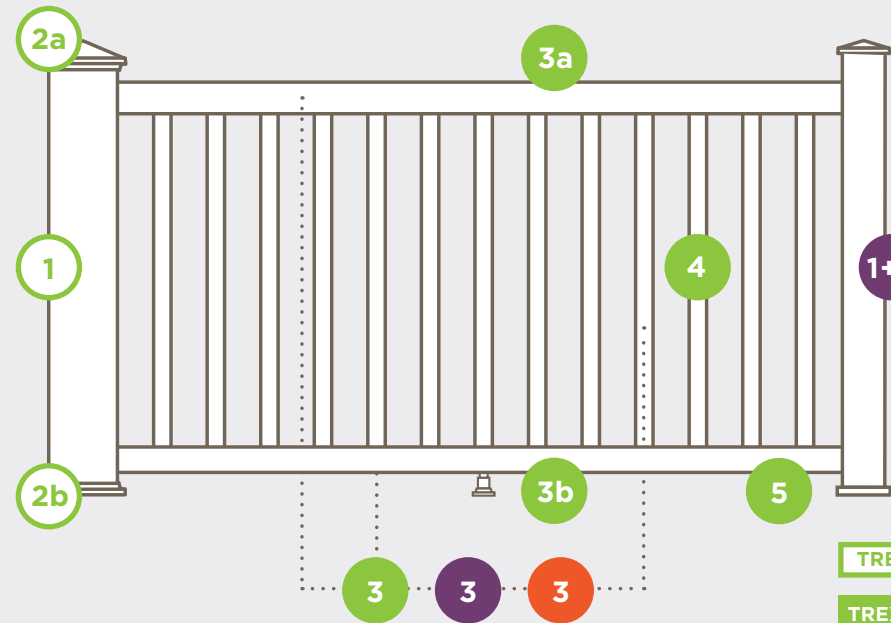
RAILING COMPONENTS (for use with Trex Elevations)

Joist Mount Post with Cap & Skirt Actual dimensions: 2.5 in x 2.5 in x 63 in (63 mm x 63 mm x 160 cm)	2.5 in x 2.5 in x 63 in	XXJMNTPOST63
Trex Elevations® Rail Post Blocking	10/box	ELVRAILPOSTBLOCK
Trex Elevations® Fascia Mount Kit (for use with Elevations steel framing)	For use with Joist Mount Signature Railing Post only.	XXFMNTELEV

PROFILE	DESCRIPTION	ITEM NUMBER	COLORS
1" Square-Edge Board Actual dimensions: Transcend & Enhance: .94 in x 5.5 in x 12 ft / 16 ft / 20 ft (24 mm x 140 mm x 365 cm / 487 cm / 609 cm) Select: .82 in x 5.5 in x 12 ft / 16 ft / 20 ft (20 mm x 140 mm x 365 cm / 487 cm / 609 cm)	1 x 6 x 12' Transcend 1 x 6 x 16' Transcend 1 x 6 x 20' Transcend	XX010612TS01 XX010616TS01 XX010620TS01	HG, IM, LR, SR, TT, FP, GP, RS, TH, VL
	1 x 6 x 12' Enhance 1 x 6 x 16' Enhance 1 x 6 x 20' Enhance	XX010612ES01 XX010616ES01 XX010620ES01	BD, CS, SD
	7/8 x 6 x 12' Select 7/8 x 6 x 16' Select 7/8 x 6 x 20' Select	XX010612SS01 XX010616SS01 XX010620SS01	MB, PG, SD, WG, WB
1" Grooved-Edge Board Actual dimensions: Transcend & Enhance: .94 in x 5.5 in x 12 ft / 16 ft / 20 ft (24 mm x 140 mm x 365 cm / 487 cm / 609 cm) Select: .82 in x 5.5 in x 12 ft / 16 ft / 20 ft (20 mm x 140 mm x 365 cm / 487 cm / 609 cm)	1 x 6 x 12' Transcend 1 x 6 x 16' Transcend 1 x 6 x 20' Transcend	XX010612TG01 XX010616TG01 XX010620TG01	HG, IM, LR, SR, TT, FP, GP, RS, TH, VL
	1 x 6 x 12' Enhance 1 x 6 x 16' Enhance 1 x 6 x 20' Enhance	XX010612EG01 XX010616EG01 XX010620EG01	BD, CS, SD
	7/8 x 6 x 12' Select 7/8 x 6 x 16' Select 7/8 x 6 x 20' Select	XX010612SG01 XX010616SG01 XX010620SG01	MB, PG, SD, WG, WB
1" Grooved Porch Floor Board Actual dimensions: .94 in x 4.5 in x 12 ft / 16 ft (24 mm x 114 mm x 365 cm / 487 cm) Can also be used for decking applications.	1 x 4.5 x 12' Transcend Porch 1 x 4.5 x 16' Transcend Porch	XX010512TP01 XX010516TP01	GP, SR
1" x 8" Fascia Actual dimensions: Transcend, Enhance, Select, Universal White: .56 in x 7.25 in x 12 ft (14 mm x 184 mm x 365 cm)	1 x 8 x 12' Transcend	XX010812TS01	HG, IM, LR, SR, TT, FP, GP, RS, TH, VL
	1 x 8 x 12' Enhance	XX010812ES01	BD, CS, SD
	1 x 8 x 12' Select	XX010812SS01	MB, PG, SD, WG, WB
	1 x 8 x 12' Universal White	WW010812ES01	WOOD GRAIN WHITE
1" x 12" Fascia Actual dimensions: Transcend, Enhance, Select, Universal White: .56 in x 11.375 in x 12 ft (14 mm x 288 mm x 365 cm)	1 x 12 x 12' Transcend	XX011212TS01	HG, IM, LR, SR, TT, FP, GP, RS, TH, VL
	1 x 12 x 12' Enhance	XX011212ES01	BD, CS, SD
	1 x 12 x 12' Select	XX011212SS01	MB, PG, SD, WG, WB
	1 x 12 x 12' Universal White	WW011212ES01	WOOD GRAIN WHITE
2" Square-Edge Board Actual dimensions: Transcend 2x4: 1.3 in x 3.4 in x 16 ft (33 mm x 86 mm x 487 cm) Transcend & Select 2x6: 1.3 in x 5.5 in x 12 ft / 16 ft / 20 ft (33 mm x 140 mm x 365 cm / 487 cm / 609 cm)	2 x 4 x 16' Transcend	XX020416TS01	HG, IM, LR, SR, TT
	2 x 6 x 12' Transcend	XX020612TS01	HG, IM, LR, SR, TT
	2 x 6 x 16' Transcend	XX020616TS01	
	2 x 6 x 20' Transcend	XX020620TS01	
	2 x 6 x 12' Select	XX020612SS01	MB, PG, SD, WB
	2 x 6 x 16' Select	XX020616SS01	
2 x 6 x 20' Select	XX020620SS01		

XX = COLOR PREFIX:	HG Havana Gold	SR Spiced Rum	GP Gravel Path	VL Vintage Lantern	SD Saddle	BD Beach Dune
	IM Island Mist	TT Tiki Torch	RS Rope Swing	MB Madeira	WG Winchester Grey	CS Clam Shell
	LR Lava Rock	FP Fire Pit	TH Tree House	PG Pebble Grey	WB Woodland Brown	

TREX HIDEAWAY® HIDDEN FASTENING SYSTEM	DESCRIPTION	ITEM NUMBER
Connector Clip (stainless steel)		50 sq. ft (4.6 sq. m) box 500 sq. ft (46.5 sq. m) bucket
Gun Pail		500 sq. ft (46.5 sq. m) bucket with collated pneumatic screws
Universal Starter Clip		400 sq. ft (37 sq. m) bag
Universal Fastener (glass-filled nylon)		50 sq. ft (4.6 sq. m) box 500 sq. ft (46.5 sq. m) bucket
Router Bit		Router Bit



RAILING— a lot easier than it looks

Selecting the right railing is pretty easy, but each Trex railing line is a little different. Please read the system descriptions at the top of each product section so you can choose exactly which railing components you need to complete your design. For additional guidance, the chart to the left depicts each railing system's components.

TREX POST COMPONENTS
TREX TRANSCEND® RAILING
TREX SIGNATURE™ RAILING
TREX SELECT® RAILING

Trex Post Sleeves, Caps & Skirts

These components can be used as steps 1 & 2 for all Trex railing lines.

STEP	COMPONENT	DESCRIPTION	ITEM NUMBER
1	Post Sleeve	4" x 4" x 39" Post Sleeve <i>[4.45 in x 4.45 in x 40 in (113 mm x 113 mm x 101 cm) external dimensions]</i>	XX040439APS
		4" x 4" x 108" Post Sleeve <i>[4.45 in x 4.45 in x 108 in (113 mm x 113 mm x 274 cm) external dimensions]</i>	XX0404108APS
		6" x 6" x 39" Post Sleeve <i>[5.5 in x 5.5 in x 39 in (139 mm x 139 mm x 990 mm) external dimensions]</i>	WT060639APS
		6" x 6" x 108" Post Sleeve <i>[5.5 in x 5.5 in x 108 in (139 mm x 139 mm x 274 cm) external dimensions]</i>	WT0606108APS
		Each 4x4 and 6x6 post sleeve fits over a 4x4 pressure treated post or equivalent post mount.	
2a	Post Sleeve Cap	Flat 4" x 4" Post Sleeve Cap Pyramid 4" x 4" Post Sleeve Cap <i>[4.55 in x 4.55 in (115 mm x 115 mm) internal dimensions]</i>	PXXSQCAP4X4 PXXPYCAP4X4
		Flat 6" x 6" Post Sleeve Cap Pyramid 6" x 6" Post Sleeve Cap <i>[5.55 in x 5.55 in (140 mm x 140 mm) internal dimensions]</i>	PWTSQCAP6X6 PWTPYCAP6X6
		Also available with LED lighting. See page 52.	
2b	Post Sleeve Skirt	4" x 4" Post Sleeve Skirt <i>[4.55 in x 4.55 in (115 mm x 115 mm) internal dimensions]</i>	PXXSKIRT4X4
		6" x 6" Post Sleeve Skirt <i>[5.55 in x 5.55 in (140 mm x 140 mm) internal dimensions]</i>	PWTSKIRT6X6
ACCESSORY	Surface Mount Post (for use with 4 x 4 composite post sleeve)	Aluminum Surface Mount Post for 36" (914 mm) Rail Height (1/box) <i>Actual external dimensions of insert: 3.75 in x 3.75 in x 7 in (95 mm x 95 mm x 177 mm)</i> Aluminum Surface Mount Post for 42" (1066 mm) Rail Height (1/box) <i>Actual external dimensions of insert: 3.75 in x 3.75 in x 7 in (95 mm x 95 mm x 177 mm)</i> Surface Mount Post Hardware—Wood (10 kits/box)	ALPOSTMOUNT36 ALPOSTMOUNT42 ALPOSTHWDECK
ACCESSORY	Joist Mount Post (for use with 4x4 composite post sleeve)	Aluminum Joist Mount Post for use with all Trex railing heights (1/box) <i>Actual external dimensions of insert: 3.75 in x 3.75 in x 7 in (95 mm x 95 mm x 177 mm)</i>	CPJMNTPOST63
ACCESSORY	Foot Block	Adjustable Foot Blocks	XXFTBLKPC

Trex® Signature™ Aluminum Railing

Choose either aluminum posts or composite post sleeves, caps and skirts for steps 1 & 2. Pair with a rail & baluster kit (step 3).

STEP	COMPONENT	DESCRIPTION	ITEM NUMBER
1+2	Aluminum Post with Cap & Skirt	2.5" x 2.5" x 37" Post—Horizontal (IRC Compliant) <i>[2.5 in x 2.5 in x 37 in (63 mm x 63 mm x 939 mm) actual dimensions]</i>	XXAL252537RCAP
	Aluminum Crossover Post	2.5" x 2.5" x 43" Post—Horizontal (IRC Compliant) <i>[2.5 in x 2.5 in x 43 in (63 mm x 63 mm x 109 cm) actual dimensions]</i> 2.5" x 2.5" x 53" Post—Stair (IRC Compliant) <i>[2.5 in x 2.5 in x 53 in (63 mm x 63 mm x 134 cm) actual dimensions]</i> 2.5" x 2.5" x 36" Crossover Post—Horizontal (IRC Compliant) <i>[2.5 in x 2.5 in x 36 in (63 mm x 63 mm x 914 mm) actual dimensions]</i> 2.5" x 2.5" x 42" Crossover Post—Horizontal (IRC Compliant) <i>[2.5 in x 2.5 in x 42 in (63 mm x 63 mm x 106 cm) actual dimensions]</i>	XXAL252543RCAP XXAL252553RCAP XXAL252536RCCP XXAL252542RCCP
	IRC Surface Mount Hardware	Aluminum Mounting Plate & Hardware <i>For use with all Trex 2.5" Surface Mount Aluminum Posts</i> Concrete Post Mount Kit	ALPOSTHWDECK ALPOSTHWCONC
	Aluminum Joist Mount Post with Cap & Skirt	2.5" x 2.5" x 63" <i>[2.5 in x 2.5 in x 63 in (63 mm x 63 mm x 160 cm) actual dimensions]</i>	XXJMNTPOST63
	Trex® Signature™ Fascia Mount Kit (for use with wood framing)	For use with Joist Mount Signature Railing Post only.	XXFMNTWOOD

STEP	DESCRIPTION	ITEM NUMBER	DESCRIPTION	ITEM NUMBER		
3	Rail & Baluster Kit (includes Top Rail, Bottom Rail, Balusters, Mounting & Support Hardware)		Rail & Rod Kit (includes Top Rail, Bottom Rail, Rods, Mounting & Support Hardware)			
			6' x 36" Rail Kit w. Square Balusters—Horizontal	XXAS0636HRK	6' x 36" Black Frame & Platinum Rod Railing—Horizontal	BKPLROD0636HRK
			6' x 36" Rail Kit w. Square Balusters—Stair	XXAS0636SRK	6' x 36" Black Frame & Platinum Rod Railing—Stair	BKPLROD0636SRK
			8' x 36" Rail Kit w. Square Balusters—Horizontal	XXAS0836HRK	8' x 36" Black Frame & Platinum Rod Railing—Horizontal	BKPLROD0836HRK
			8' x 36" Rail Kit w. Square Balusters—Stair	XXAS0836SRK	8' x 36" Black Frame & Platinum Rod Railing—Stair	BKPLROD0836SRK
			6' x 42" Rail Kit w. Square Balusters—Horizontal	XXAS0642HRK	6' x 42" Black Frame & Platinum Rod Railing—Horizontal	BKPLROD0642HRK
			6' x 42" Rail Kit w. Square Balusters—Stair	XXAS0642SRK	6' x 42" Black Frame & Platinum Rod Railing—Stair	BKPLROD0642SRK
			8' x 42" Rail Kit w. Square Balusters—Horizontal	XXAS0842HRK	8' x 42" Black Frame & Platinum Rod Railing—Horizontal	BKPLROD0842HRK
			8' x 42" Rail Kit w. Square Balusters—Stair	XXAS0842SRK	8' x 42" Black Frame & Platinum Rod Railing—Stair	BKPLROD0842SRK
			6' x 36" Rail Kit w. Round Balusters—Horizontal	XXAR0636HRK	6' x 36" Bronze Frame & Platinum Rod Railing—Horizontal	BZPLROD0636HRK
			6' x 36" Rail Kit w. Round Balusters—Stair	XXAR0636SRK	6' x 36" Bronze Frame & Platinum Rod Railing—Stair	BZPLROD0636SRK
			8' x 36" Rail Kit w. Round Balusters—Horizontal	XXAR0836HRK	8' x 36" Bronze Frame & Platinum Rod Railing—Horizontal	BZPLROD0836HRK
8' x 36" Rail Kit w. Round Balusters—Stair	XXAR0836SRK	8' x 36" Bronze Frame & Platinum Rod Railing—Stair	BZPLROD0836SRK			
6' x 42" Rail Kit w. Round Balusters—Horizontal	XXAR0642HRK	6' x 42" Bronze Frame & Platinum Rod Railing—Horizontal	BZPLROD0642HRK			
6' x 42" Rail Kit w. Round Balusters—Stair	XXAR0642SRK	6' x 42" Bronze Frame & Platinum Rod Railing—Stair	BZPLROD0642SRK			
8' x 42" Rail Kit w. Round Balusters—Horizontal	XXAR0842HRK	8' x 42" Bronze Frame & Platinum Rod Railing—Horizontal	BZPLROD0842HRK			
8' x 42" Rail Kit w. Round Balusters—Stair	XXAR0842SRK	8' x 42" Bronze Frame & Platinum Rod Railing—Stair	BZPLROD0842SRK			
6' x 36" Assembled Panel (Square)—Horizontal*	BKAS0636HRPNL	6' x 36" Black Frame & Black Rod Railing—Horizontal	BKBKROD0636HRK			
8' x 36" Assembled Panel (Square)—Horizontal*	BKAS0836HRPNL	6' x 36" Black Frame & Black Rod Railing—Stair	BKBKROD0636SRK			
6' x 42" Assembled Panel (Square)—Horizontal*	BKAS0642HRPNL	8' x 36" Black Frame & Black Rod Railing—Horizontal	BKBKROD0836HRK			
8' x 42" Assembled Panel (Square)—Horizontal*	BKAS0842HRPNL	8' x 36" Black Frame & Black Rod Railing—Stair	BKBKROD0836SRK			
*Does not include hardware						
Dimensions above are actuals. See below for metrics. <i>[6' x 36": 72 in x 36 in (182 cm x 914 mm) actual dimensions]</i> <i>[8' x 36": 96 in x 36 in (243 cm x 914 mm) actual dimensions]</i> <i>[6' x 42": 72 in x 42 in (182 cm x 106 cm) actual dimensions]</i> <i>[8' x 42": 96 in x 42 in (243 cm x 106 cm) actual dimensions]</i>						
ACCESSORY	Trex® Signature™ Accessories					
	Trex® Signature™ Bracket Templates					
	HZ Bracket Template (36" and 42") - Composite Sleeve	SIGTEMP4X4SLEEVE	Cocktail Rail Bracket (10/pack) Fixed Bracket—Horizontal (4/pack) Fixed Bracket—Stair (4/pack)	XXCTBKAL10PK XXFHBKTAL XXFSBKTAL		
	HZ Bracket Template (36" and 42") - 2.5" Aluminum Post	SIGTEMPIRCPOST	Swivel Bracket—Horizontal (2/pack—1 top, 1 bottom) Swivel Bracket—Stair (2/pack—1 top, 1 bottom) 2.5" Horizontal Crossover Bracket (1/pack) 2.5" Swivel Crossover Bracket—Stair (1/pack) Compound Swivel Bracket (2/pack—1 top, 1 bottom) Aluminum Foot Block Touch-up Pen	XXSWHBKTAL XXSWSBKTAL XX25FHCBKTAL XX25RCSWSBKTAL XXCPDSWBKTAL XXALFTBLK XXTOUCHUPPEN		

STEP	DESCRIPTION	ITEM NUMBER	DESCRIPTION	ITEM NUMBER

Trex Transcend® Railing

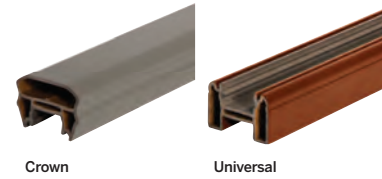
● **Transcend is either a 3-step or 5-step process. Choose Trex post sleeves, caps and skirts (steps 1 & 2), then choose a rail & baluster kit (step 3). OR choose each component individually for a custom design (steps 4 & 5)**

STEP	COMPONENT	DESCRIPTION	ITEM NUMBER
------	-----------	-------------	-------------

3a

Top & Bottom Rails
In this step, two rails (1 top, 1 bottom) must be selected.

3b



6' Crown Top Rail
8' Crown Top Rail
XXCROWNTR06
XXCROWNTR08

6' Universal Top/Bottom Rail
8' Universal Top/Bottom Rail
XXUNIVTBR06
XXUNIVTBR08

[6' Rail: 67.5 in (171 cm) actual length; 8' Rail: 91.5 in (232 cm) actual length]

4

Balusters
See chart below for number of balusters needed to complete each railing section.



BALUSTER TYPE	PER 6' SECTION	PER 8' SECTION
Square (Horizontal application)	13	18
Square (Stair application)	11	15
Aluminum (Horizontal application)	15	20
Aluminum (Stair application)	12	16

Aluminum balusters are available in Charcoal Black, Classic White and Bronze only (BK, WT, BZ).

Square Balusters for 36" Rail Height (16/pack)
[1.418 in x 1.418 in x 30.375 in (36 mm x 36 mm x 771 mm) actual dimensions]
XX020230SBK

Square Balusters for 42" Rail Height (16/pack)
[1.418 in x 1.418 in x 36.375 in (36 mm x 36 mm x 923 mm) actual dimensions]
XX020236SBK

Round Aluminum Balusters for 36" Rail Height (20/pack)
[.75 in x 30.25 in (19 mm x 768 mm) actual dimensions]
XXTA30RBK

Round Aluminum Balusters for 42" Rail Height (20/pack)
[.75 in x 36.25 in (19 mm x 920 mm) actual dimensions]
XXTA36RBK

Square Aluminum Balusters for 36" Rail Height (20/pack)
[.75 in x 30.25 in (19 mm x 768 mm) actual dimensions]
XXTA30SBK

Square Aluminum Balusters for 42" Rail Height (20/pack)
[.75 in x 36.25 in (19 mm x 920 mm) actual dimensions]
XXTA36SBK

5

Accessory Infill Kit
» 2 Baluster Spacers
» Adjustable Foot Block
» Mounting Hardware

[6' Rail: 67.5 in (171 cm) actual length;
8' Rail: 91.5 in (232 cm) actual length]

6' Accessory Infill Kit for Square Balusters—Horizontal
6' Accessory Infill Kit for Square Balusters—Stair
8' Accessory Infill Kit for Square Balusters—Horizontal
8' Accessory Infill Kit for Square Balusters—Stair
XXSQHIK06
XXSQSIK06
XXSQHIK08
XXSQSIK08

6' Accessory Infill Kit for Round Aluminum Balusters—Horizontal
6' Accessory Infill Kit for Round Aluminum Balusters—Stair
8' Accessory Infill Kit for Round Aluminum Balusters—Horizontal
8' Accessory Infill Kit for Round Aluminum Balusters—Stair
XXRDHIK06
XXRDSIK06
XXRDHIK08
XXRDSIK08

6' Accessory Infill Kit for Square Aluminum Balusters—Horizontal
6' Accessory Infill Kit for Square Aluminum Balusters—Stair
8' Accessory Infill Kit for Square Aluminum Balusters—Horizontal
8' Accessory Infill Kit for Square Aluminum Balusters—Stair
XXASBHIK06
XXASBSIK06
XXASBHIK08
XXASBSIK08

6' Glass Panel Accessory Kit [Glass panel mounting hardware: **glass panel not included**]
XXGLIK06

ACCESSORY Trex Transcend® Accessories

All accessories include a quantity of 12 per box unless otherwise noted.

Mounting Hardware for Cut Rails—Horizontal
Mounting Hardware for Cut Rails—Stair
Transcend RSB Bracket Pack—Horizontal (24/box)
Transcend RSB Bracket Pack—Stair (24/box)
0 Degree Rail Gasket Pack—Horizontal
0 Degree Rail Gasket Pack—Stair
22.5 Degree Gasket Pack
45 Degree Birdsmouth Gasket Pack (for 4 x 4)
45 Degree Gasket Pack (for 6 x 6)
XXHZACCYKIT
XXSTACCYKIT
TSHBRACKET
TSSBRACKET
XX00HGASK
XX00SGASK
XX22HGASK
XX45RSBADAPK
WT45HGASK

● Or simply choose a rail & baluster kit in Classic White (3-step).

3

Rail & Baluster Kit
» Crown Top Rail
» Universal Bottom Rail
» Square Balusters
» Baluster Spacers
» Adjustable Foot Block
» Mounting Hardware



Available in Classic White only.

6' x 36" Rail & Baluster Kit—Horizontal
6' x 36" Rail & Baluster Kit—Stair
WT0636HRK
WT0636SRK

8' x 36" Rail & Baluster Kit—Horizontal
8' x 36" Rail & Baluster Kit—Stair
WT0836HRK
WT0836SRK

[Actual dimensions: 6' Rail: 67.5 in x 36 in (171 cm x 914 mm);
8' Rail: 91.5 in x 36 in (232 cm x 914 mm)]

Trex Select® Railing

● **Trex Select® is a 3-step process. Choose Trex post sleeves, caps and skirts (steps 1 & 2) and a rail & baluster kit (step 3).**

STEP	COMPONENT	DESCRIPTION	ITEM NUMBER
------	-----------	-------------	-------------

3

Classic White Rail & Aluminum Baluster Kit

- » Top Rail
 - » Bottom Rail
 - » Round Aluminum Balusters
 - » Adjustable Foot Block
 - » Hardware Pack
- Available in Classic White with Charcoal Black Aluminum Balusters only.



6' x 36" Rail & Aluminum Baluster Kit—Horizontal
6' x 36" Rail & Aluminum Baluster Kit—Stair
WTRD0636HSELK
WTRD0636SSELK

8' x 36" Rail & Aluminum Baluster Kit—Horizontal
8' x 36" Rail & Aluminum Baluster Kit—Stair
WTRD0836HSELK
WTRD0836SSELK

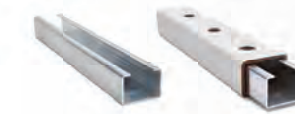
6' x 42" Rail & Aluminum Baluster Kit—Horizontal
8' x 42" Rail & Aluminum Baluster Kit—Horizontal
8' x 42" Rail & Aluminum Baluster Kit—Stair
WTRD0642HSELK
WTRD0842HSELK
WTRD0842SSELK

[Actual dimensions: 6' Rail: 67.5 in x 36 in / 42 in (171 cm x 914 mm / 106 cm);
8' Rail: 91.5 in x 36 in / 42 in (232 cm x 914 mm / 106 cm);

ACCESSORY Trex Select® Accessories

Trex Select® 8' Aluminum Rail Stiffener

Mounting Hardware for Cut Rails—Horizontal (10 kits/box)
Mounting Hardware for Cut Rails—Stair (10 kits/box)



BKENHZBKT
BKENSTBKT

SELALRAILSTIFFENER

Trex Aluminum Gates

COMPONENT	DESCRIPTION	ITEM NUMBER
-----------	-------------	-------------

Gate Rail Kit

Available in all Aluminum colors.

36" Rail Height, Square Balusters, Adjustable up to 48" wide opening
36" Rail Height, Round Balusters, Adjustable up to 48" wide opening
42" Rail Height, Square Balusters, Adjustable up to 48" wide opening
42" Rail Height, Round Balusters, Adjustable up to 48" wide opening

[Actual height 36" Rail: 36 in (914 mm); 42" Rail: 42 in (106 cm)
Actual width is 47.5 in (120 cm) but can be cut to fit any width.]

XX36SQADJGATE
XX36RDADJGATE
XX42SQADJGATE
XX42RDADJGATE

Hardware Pack



2 Adjustable Self-Closing Hinges
1 Locking Hasp With Keys
Hardware for attachment to wood post with composite sleeve or aluminum posts

BKGATEHW



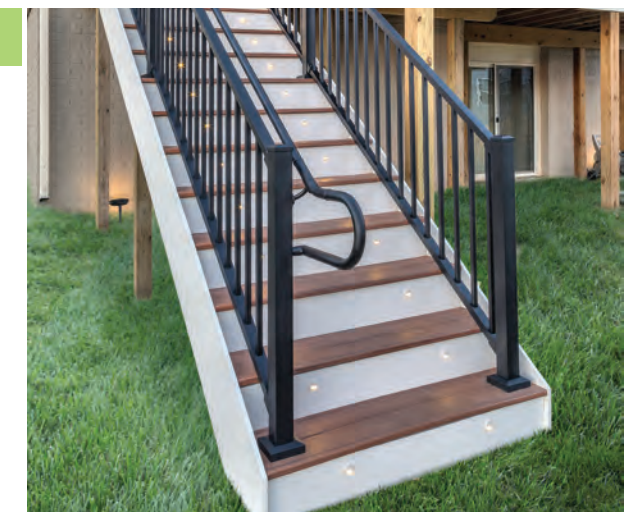
Trex Aluminum ADA Compliant Handrail

All Trex ADA handrail components are made of powder-coated aluminum. For detailed installation instructions, visit trex.com.

COMPONENT	ITEM NUMBER
-----------	-------------

Corner Mount
Post Return ("Candy Cane")
5 Degree Elbow
31 Degree Elbow
34 Degree Elbow
36 Degree Elbow
90 Degree Elbow
Collar
Rail End Cap
90 Degree Wall Return
Wall Mount
4 in (101 mm) Internal Connector
1.375 in x 8 ft (34 mm x 243 cm) Hand Rail

XXALADAICORNER
XXALADA180CCANE
XXALADA05ELB
XXALADA31ELB
XXALADA34ELB
XXALADA36ELB
XXALADA90ELB
XXALADACL
XXALADACAP
XXALADA90WR
XXALADAWMNT
XXALINTCONN
XXALADARAIL8



LANDSCAPE LIGHTING

- Rounded Path Light
- Stepped Path Light
- Well Light
- Multifunction Light
- Spotlight*



- BKRDPATH2PK, BZRDPATH2PK
- BKSPATH2PK, BZSPATH2PK
- BKWELL, BZWELL
- BKMULTI, BZMULTI
- BKSPOT, BZSPOT

*Includes: 36v Step-up Transformer & Female to Female Adapter

DECK LIGHTING

Pyramid or Flat Post Cap Light

- » 4" x 4" LED Post Cap Light
[4.55 in x 4.55 in (115 mm x 115 mm) actual internal dimensions]
Use with Trex 4 in Composite Railing Posts
- » 5.5 ft (1.67 m) Male LightHub® Lead



PYRAMID CAPS

- BKPYLEDCAP4X4C
- WTPYLEDCAP4X4C
- FPPYLEDCAP4X4C
- THPYLEDCAP4X4C
- VLPYLEDCAP4X4C
- GPPYLEDCAP4X4C
- RSPYLEDCAP4X4C

FLAT CAPS

- BKSQLEDCAP4X4C
- WTSQLEDCAP4X4C
- FPSQLEDCAP4X4C
- THSQLEDCAP4X4C
- VLSQLEDCAP4X4C
- GPSQLEDCAP4X4C
- RSSQLEDCAP4X4C
- TEXTURED CHARCOAL BLACK: BKALCAPLED25
- TEXTURED BRONZE: BZALCAPLED25
- TEXTURED WHITE: WTALCAPLED25

Aluminum Post Cap Light

- » 2.5" x 2.5" LED Aluminum Post Cap Light
[2.6 in x 2.6 in (66 mm x 66 mm) actual internal dimensions]
Use with Trex 2.5 in Aluminum Railing Posts
- » 5.5 ft (1.67 m) Male LightHub Lead

Deck Rail Light

- » LED Deck Rail Light
[2.75 in (69 mm) OD]
- » 5.5 ft (1.67 m) Male LightHub Lead



- TEXTURED CHARCOAL BLACK: BKLAMPLED25
- TEXTURED BRONZE: BZLAMPLED25
- TEXTURED CLASSIC WHITE: WTLAMPLED25

Wedge Deck Rail Light

- » LED Wedge Deck Rail Light
[1.875 in wide x 3 in high (47 mm x 76 mm) actual dimensions]
Compatible with all Trex Railing Posts
- » 5.5 ft (1.67 m) Male LightHub Lead



- TEXTURED CHARCOAL BLACK: BKALPOSTLAMPLED
- TEXTURED BRONZE: BZALPOSTLAMPLED
- TEXTURED CLASSIC WHITE: WTALPOSTLAMPLED

LED Riser Lights

- » 4 LED Riser Lights
[1.25 in (31 mm) OD]
- » 5.5 ft (1.67 m) Male LightHub Lead



- TEXTURED CHARCOAL BLACK: BKRISERLED4PKC
- TEXTURED BRONZE: BZRISERLED4PKC
- TEXTURED CLASSIC WHITE: WTRISERLED4PKC

Recessed Deck Lights

- » 4 LED Recessed Lights
[1 in (25 mm) OD]
- » 5.5 ft (1.67 m) Male LightHub Lead



- RECESSLED4PKC

ACCESSORIES

Transformer with Timer

- » Output Voltage: 12VDC
- » Output Power: 100W or 30W
- » Output Current: 8.3A or 2.5A
- » Photo-Activated Timer
- » 20 ft (6.09 m) LightHub Wire Extension Cable



- 8.3A, 100W: 83DLTRANSFORMER
- 2.5A, 30W: 25DLTRANSFORMER

Multi-zone Transformer Adapter



- DL5FTSPLIT1PK

Dimmer

- » Single Channel with Remote



- DLDIMMER

1 in (25 mm) Forstner Bit—Pack of 6



- DLBIT6PK

LightHub Accessories

- » 3-Way Splitter
- » 6-Way Splitter
- » 5 ft (1.52 m) Wire Extension Cable
- » 10 ft (3.04 m) Wire Extension Cable
- » 20 ft (6.09 m) Wire Extension Cable
- » 40 ft (12.19 m) Wire Extension Cable
- » 60 ft (18.28 m) Wire Extension Cable
- » Female to Female Adapter



- DL3SPLIT6PK
- DL6SPLIT4PK
- DL5FTWR4PK
- DL10FTWR4PK
- DL20FTWR4PK
- DL40FTWR2PK
- DL60FTWR1PK
- DLFADAP6PK



TREX® LIMITED WARRANTY

Trex Company, Inc. (hereinafter "Trex") warrants to the original purchaser ("Purchaser") that, for the period of time set forth in the following sentence, under normal use and service conditions, Trex® products shall be free from material defects in workmanship and materials, and shall not split, splinter, rot or suffer structural damage from termites or fungal decay. The term of such warranty shall be twenty-five (25) years from the date of original purchase for a residential application, and ten (10) years from the date of original purchase for a commercial application. If a defect occurs within the warranty period, Purchaser shall notify Trex in writing and, upon confirmation by an authorized Trex representative of the defect, Trex's sole responsibility shall be, at its option, to either replace the defective item or refund the portion of the purchase price paid by Purchaser for such defective item (not including the cost of its initial installation).

Notwithstanding the foregoing, (a), the term of the warranty for the LED lights and housing for Trex® DeckLighting™ shall be seven (7) years, the term of the warranty for the LED lights and housing for Trex® LandscapeLighting™ shall be five (5) years, and the term of the warranty for the dimmer, timer and transformer for both shall be three (3) years, in each case provided that a Trex transformer is used (with no warranty on any components if a Trex transformer is not used), and any other parts or accessories shall not be warranted; (b) with respect to hardware for the Trex Surroundings® gate (gate frame, hinges and screws), the term of the warranty shall be five (5) years, (c) with respect to Trex Decorative Balusters, the term of the warranty covering the paint coating shall be ten (10) years, and shall be prorated in the following manner: 100% replacement for the first five (5) years; and 50% replacement for the next five (5) years, and (d) this warranty shall not apply to Trex Elevations® steel deck framing, Trex® Signature™/Reveal® aluminum railing and TrexTrim™ (which each have separate warranties).

For purposes of this warranty, a "residential application" shall refer to an installation of the Product on an individual residence, and a "commercial application" shall refer to any installation of the Product other than on an individual residence.

TO THE FULLEST EXTENT PERMITTED UNDER THE LAW, THIS WARRANTY SHALL NOT COVER AND TREX SHALL NOT BE RESPONSIBLE FOR COSTS AND EXPENSES INCURRED WITH RESPECT TO THE REMOVAL OF DEFECTIVE TREX PRODUCTS OR THE INSTALLATION OF REPLACEMENT MATERIALS, INCLUDING BUT NOT LIMITED TO LABOR AND FREIGHT.

With respect to a residential application, this warranty may be transferred one (1) time, within the five (5) year period beginning from the date of original purchase by the Purchaser, to a subsequent buyer of the property upon which the Trex products were originally installed. With respect to a commercial application, this warranty is freely transferable to subsequent buyers of the property upon which the Trex products were originally installed.

To make a claim under this limited warranty, Purchaser, or the transferee, shall send to Trex, within the warranty period referred to above, a description of the claimed defect and proof of purchase, to the following address:

Trex Company, Inc.
Customer Relations
160 Exeter Drive
Winchester, VA 22603-8605

Trex does not warrant against and is not responsible for any condition attributable to: (1) improper installation of Trex products and/or failure to abide by Trex's installation guidelines, including but not limited to improper gapping; (2) use of Trex products beyond normal use and service conditions, or in an application not recommended by Trex's guidelines and local building codes; (3) movement, distortion, collapse or settling of the ground or the supporting structure on which Trex products are installed; (4) any act of God (such as flooding, hurricane, earthquake, lightning, etc.), environmental condition (such as air pollution, mold, mildew, etc.), staining from foreign substances (such as dirt, grease, oil, etc.), or normal weathering (defined as exposure to sunlight, weather and atmosphere which will cause any colored surface to gradually fade, chalk, or accumulate dirt or stains); (5) variations or changes in color of Trex products; (6) improper handling, storage, abuse or neglect of Trex products by Purchaser, the transferee or third parties; or (7) ordinary wear and tear.

No person or entity is authorized by Trex to make and Trex shall not be bound by any statement or representation as to the quality or performance of Trex products other than as contained in this warranty. This warranty may not be altered or amended except in a written instrument signed by Trex and Purchaser.

TO THE FULLEST EXTENT PERMITTED UNDER THE LAW, UNDER NO CIRCUMSTANCES WILL TREX BE LIABLE FOR INCIDENTAL OR CONSEQUENTIAL DAMAGES, WHETHER SUCH DAMAGES ARE SOUGHT IN CONTRACT, IN TORT (INCLUDING BUT NOT LIMITED TO NEGLIGENCE AND STRICT LIABILITY) OR OTHERWISE, AND TREX'S LIABILITY FOR NON-PERSONAL INJURY CLAIMS WITH RESPECT TO DEFECTIVE PRODUCTS SHALL IN NO EVENT EXCEED THE REPLACEMENT OF SUCH PRODUCTS OR REFUND OF THE PURCHASE PRICE, AS DESCRIBED ABOVE.

Some States or Provinces do not allow the exclusion or limitation of incidental or consequential damages, so the above limitation or exclusion may not apply to you. This warranty gives you specific legal rights, and you may also have other rights that vary from State to State or Province to Province.

Copyright © 2018 Trex Company, Inc.



TREX TRANSCEND®, TREX ENHANCE®, TREX SELECT® AND TREX® UNIVERSAL FASCIA LIMITED FADE & STAIN WARRANTY

For the term set forth below, Trex Company, Inc. (hereinafter "Trex") warrants to the original end-user purchaser (the "Purchaser") that Trex Transcend® decking, porch or fascia, Trex Enhance® decking or fascia, Trex Select® decking or fascia or Trex® Universal Fascia, as the case may be (the "Product") will perform, under normal use and service conditions, as follows:

Term of Warranty: The term of this warranty shall begin on the date of original purchase, and shall end (1) twenty-five (25) years thereafter for a residential application of the Product, and (2) ten (10) years thereafter for a commercial application of the Product.

Residential/Commercial Application: For purposes of this warranty, a "residential application" shall refer to an installation of the Product on an individual residence, and a "commercial application" shall refer to any installation of the Product other than on an individual residence.

Fade Resistance: The Product shall not fade in color from light and weathering exposure as measured by color change of more than 5 Delta E (CIE) units.

The Product is designed to resist fading. No material is fade proof when exposed to years of UV exposure and the elements. The Product is designed to resist fading, and will not in any event fade by more than 5 Delta E (CIE) units.

Stain Resistance: The Product shall be resistant to permanent staining resulting from spills of food and beverage items including ketchup, mustard, salad oils, tea, wine, coffee, fruit punch, barbecue sauce, grease, sodas and other food and beverage related items that would typically be present on a residential deck, or mold and mildew naturally occurring in the environment. provided that such substances are removed from the Product with soap and water or mild household cleaners within one (1) week of exposure of the food or beverage to the surface or first appearance of the mold and mildew.

Notwithstanding the foregoing, Trex does not warrant that the Product is stain-proof, and does not warrant stain resistance resulting from spilled or otherwise applied food and beverage substances which are not properly cleaned as provided above within one (1) week of exposure. In addition, materials not covered in the stain resistant warranty include abrasive compounds of acidic or basic pH, paints or stains, strong solvents, metallic rust or other abnormal deck use items, and non-food and non-beverage substances, including but not limited to, biocides, fungicides, plant food, or bactericides. Mold and mildew can settle and grow on any outdoor surface, including this Product. You should periodically clean your deck to remove dirt and pollen that can feed mold and mildew. This warranty does not cover mold and mildew which is not properly cleaned as provided above within one (1) week of first appearance.

Standard Trex Company Limited Warranty: This warranty is in addition to the standard Trex Company Limited Warranty that applies to all Trex products.

Transferability: With respect to a residential application, this warranty may be transferred one (1) time, within the five (5) year period beginning from the date of original purchase by the Purchaser, to a subsequent buyer of the property upon which the Trex products were originally installed. With respect to a commercial application, this warranty is freely transferable to subsequent buyers of the property upon which the Trex products were originally installed.

EXCLUSIONS FROM WARRANTY COVERAGE:

Exposure to Heat: Direct or indirect contact with extreme heat sources (over 275 degrees) may cause fading and may damage the surface of the Product, and any effects of such exposure are expressly excluded from coverage under this warranty.

Surface Damage: Never use metal shovels or sharp-edged tools to remove snow and ice on the surface of the Product. If the surface of the Product is damaged or punctured, this warranty will be voided.

Paint or Other Materials Applied to the Product: If paint or other coating materials are applied to the Product, this warranty will be voided.

Railing: This warranty does not cover Trex Transcend®, Trex Enhance® or Trex Select® railing components.

Other Exclusions: This warranty shall not cover any condition attributable to: (1) improper installation of the Product and/or failure to abide by Trex's installation guidelines, including but not limited to improper gapping; (2) use of the Product beyond normal use or service conditions, or in an application not recommended by Trex's guidelines and local building codes; (3) movement, distortion, collapse or settling of the ground or the supporting structure on which the Product is installed; (4) any act of God (such as flooding, hurricane, earthquake, lightning, etc.); (5) improper handling, storage, abuse or neglect of the Product by Purchaser, the transferee or third parties; (6) any fading or staining not on the walking surface of the Product (i.e., the underside or the ends of the Product); or (7) ordinary wear and tear.

Procedure for Making a Claim under this Warranty

In order to make a claim under this warranty, Purchaser must do the following:

1. If the Purchaser is making a claim relating to the warranty on stain resistance, Purchaser must do as follows:

(a) Purchaser must try to clean the affected area of the deck by using the cleaning procedures described above within one (1) week of exposure of the food or beverage to the Product or first appearance of the mold and mildew.

(b) If the affected area remains reasonably unsatisfactory after Purchaser has tried these cleaning procedures, then Purchaser must have the affected area of the deck professionally cleaned at Purchaser's expense.

(c) If the affected area remains reasonably unsatisfactory after the professional cleaning, Purchaser may make a claim under this warranty, provided that such claim is made within thirty (30) days after the professional cleaning.

2. To make a claim under this limited warranty, Purchaser, or the transferee, shall send to Trex, within the warranty period referred to above, a description and photographs of the affected area of the Product, proof of purchase, and if the claim relates to the warranty on stain resistance, proof of compliance with paragraph 1. above, to the following address:

Trex Company, Inc.
Customer Relations
160 Exeter Drive
Winchester, VA 22603-8605

3. Upon confirmation by an authorized Trex representative of a valid claim hereunder, Trex's sole responsibility shall be, at its option, to either replace the affected item or refund the portion of the purchase price paid by Purchaser for such affected item (not including the cost of its initial installation).



TREX® SIGNATURE™/REVEAL® RAILING LIMITED WARRANTY

Trex Company, Inc. (hereinafter "Trex") warrants to the original purchaser ("Purchaser") that, under normal use and service conditions, Trex® Signature™/Reveal® Railing (the "Product") shall, for a period of twenty-five (25) years from the date of original purchase, be free from material defects in workmanship and materials. If a defect occurs within the warranty period, Purchaser shall notify Trex in writing and, upon confirmation by an authorized Trex representative of the defect, Trex's sole responsibility shall be, at its option, to either replace the defective Product or refund the portion of the purchase price paid by Purchaser for such defective Product (not including the cost of its initial installation).

With respect to installations where the atmosphere is influenced by a body of salt water (or other contaminant conditions), failure to adhere to the cleaning guidelines available at www.trex.com will void this warranty with respect to any condition resulting from such failure.

TO THE FULLEST EXTENT PERMITTED UNDER THE LAW, THIS WARRANTY SHALL NOT COVER AND TREX SHALL NOT BE RESPONSIBLE FOR COSTS AND EXPENSES INCURRED WITH RESPECT TO THE REMOVAL OF DEFECTIVE PRODUCT OR THE INSTALLATION OF REPLACEMENT MATERIALS, INCLUDING BUT NOT LIMITED TO LABOR AND FREIGHT.

This warranty may be transferred one (1) time, within the five (5) year period beginning from the date of original purchase by the Purchaser, to a subsequent buyer of the property upon which the Product was originally installed.

To make a claim under this limited warranty, Purchaser, or the transferee, shall send to Trex, within the warranty period referred to above, a description of the claimed defect and proof of purchase, to the following address:

Trex Company, Inc.
Customer Relations
160 Exeter Drive
Winchester, VA 22603-8605

Replacement material will be provided that is as close as possible in color, design and quality as the replaced material, but Trex does not guarantee an exact match as colors and design may change.

4. If a valid warranty claim hereunder is made during years eleven (11) through twenty-five (25) after the original purchase for a residential application, recovery will be prorated. If Trex is providing replacement materials, it may elect to replace the percentage listed below of boards otherwise meeting the requirements for a claim, or if it is refunding the purchase price, it may elect to refund the percentage listed below of the purchase price of boards otherwise meeting the requirements for a claim.

YEAR OF WARRANTY CLAIM	PERCENTAGE RECOVERY
11	80%
12	80%
13	80%
14	60%
15	60%
16	60%
17	40%
18	40%
19	40%
20	20%
21	20%
22	20%
23	10%
24	10%
25	10%

5. TO THE FULLEST EXTENT PERMITTED UNDER THE LAW, THIS WARRANTY SHALL NOT COVER AND TREX SHALL NOT BE RESPONSIBLE FOR COSTS AND EXPENSES INCURRED WITH RESPECT TO THE REMOVAL OF AFFECTED PRODUCT OR THE INSTALLATION OF REPLACEMENT MATERIALS, INCLUDING BUT NOT LIMITED TO LABOR AND FREIGHT.

No person or entity is authorized by Trex to make and Trex shall not be bound by any statement or representation as to the quality or performance of Trex products other than as contained in this warranty. This warranty may not be altered or amended except in a written instrument signed by Trex and Purchaser.

TO THE FULLEST EXTENT PERMITTED UNDER THE LAW, UNDER NO CIRCUMSTANCES WILL TREX BE LIABLE FOR INCIDENTAL OR CONSEQUENTIAL DAMAGES, WHETHER SUCH DAMAGES ARE SOUGHT IN CONTRACT, IN TORT (INCLUDING BUT NOT LIMITED TO NEGLIGENCE AND STRICT LIABILITY) OR OTHERWISE, AND TREX'S LIABILITY FOR NON-PERSONAL INJURY CLAIMS WITH RESPECT TO PRODUCTS SHALL IN NO EVENT EXCEED THE REPLACEMENT OF SUCH PRODUCTS OR REFUND OF THE PURCHASE PRICE, AS DESCRIBED ABOVE.

Some States or Provinces do not allow the exclusion or limitation of incidental or consequential damages, so the above limitation or exclusion may not apply to you. This warranty gives you specific legal rights, and you may also have other rights that vary from State to State or Province to Province.

Copyright © 2017 Trex Company, Inc.

Trex does not warrant against and is not responsible for any condition attributable to: (1) improper installation of the Product; (2) use of the Product beyond normal use and service conditions, or in an application not recommended by Trex's guidelines and local building codes; (3) movement, distortion, collapse or settling of the ground or the supporting structure on which the Product is installed; (4) damages attributable to fire, violent storms, earthquake or other Acts of God, accidents, vandalism, or other casualties, impact of objects, or exposure to atmospheric pollutants or conditions other than natural weather processes, (5) improper handling, storage, abuse or neglect of the Product by Purchaser, the transferee or third parties; or (6) ordinary wear and tear.

No person or entity is authorized by Trex to make and Trex shall not be bound by any statement or representation as to the quality or performance of Trex products other than as contained in this warranty. This warranty may not be altered or amended except in a written instrument signed by Trex and Purchaser.

TO THE FULLEST EXTENT PERMITTED UNDER THE LAW, UNDER NO CIRCUMSTANCES WILL TREX BE LIABLE FOR INCIDENTAL OR CONSEQUENTIAL DAMAGES, WHETHER SUCH DAMAGES ARE SOUGHT IN CONTRACT, IN TORT (INCLUDING BUT NOT LIMITED TO NEGLIGENCE AND STRICT LIABILITY) OR OTHERWISE, AND TREX'S LIABILITY FOR NON-PERSONAL INJURY CLAIMS WITH RESPECT TO DEFECTIVE PRODUCTS SHALL IN NO EVENT EXCEED THE REPLACEMENT OF SUCH PRODUCTS OR REFUND OF THE PURCHASE PRICE, AS DESCRIBED ABOVE.

Some States or Provinces do not allow the exclusion or limitation of incidental or consequential damages, so the above limitation or exclusion may not apply to you. This warranty gives you specific legal rights, and you may also have other rights that vary from State to State or Province to Province.

Copyright © 2018 Trex Company, Inc.